

# LCD Module

# RoHS

## NLC160CG160CHJRGB

(Status: April 2011)

# Specification V1.1

### Approval of Specification

	Approved by	Date
<b>Admatec</b>	<i>Stahl</i>	06.04.2011
<b>Customer</b>		

This product complies to EU directive 2002/95/EC (RoHS) of January 27th,2003.

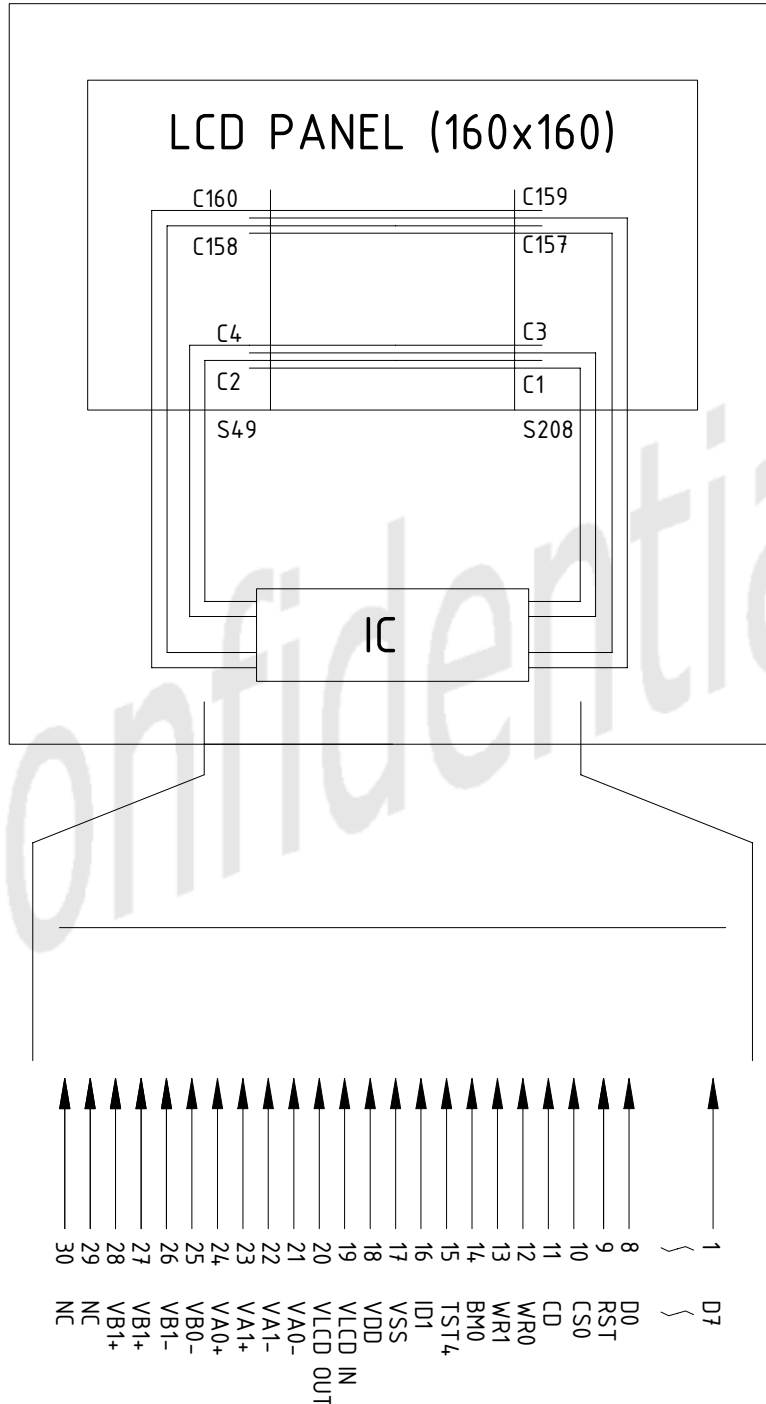


# 1. MECHANICAL DATA

NO.	ITEM	CONTENTS	UNIT
1	Product No.	NLC160CG160CHJRGB	
2	Module Size	88.2(W)*77.7(H)*6.5(T)	mm
3	Dot Size	0.345(W)*0.345(H)	mm
4	Dot Pitch	0.36(W)*0.36(H)	mm
5	Number of Dots	160(W)*160(H)	--
6	Duty	1/160	--
7	LCD Type	FSTN, normally White / Positive Image	--
8	Rear Polarizer	Transflective (high transmissive)	--
9	Viewing Direction	6 O'clock	--
10	Backlight	LED RGB	--
11	Controller	UltraChip UC1611W or Compatible	--
12	DC/DC Converter	Included	--
13	Touch Panel	Excluded	--
14	Weight	50 (Approx.)	g



# 5. BLOCK DIAGRAM





## 6. INTERNAL PIN CONNECTION

### LCD

PIN No.	SYMBOL
1	D7
2	D6
3	D5
4	D4
5	D3
6	D2
7	D1
8	D0
9	/RST
10	/CS0
11	CD
12	WR0
13	WR1
14	BM0
15	TST4

PIN No.	Symbol
16	ID1
17	V <sub>SS</sub>
18	V <sub>DD</sub>
19	V <sub>LCD</sub> IN
20	V <sub>LCD</sub> OUT
21	VA0-
22	VA1-
23	VA1+
24	VA0+
25	VB0-
26	VB1-
27	VB1+
28	VB0+
29	NC
30	NC

**NOTE:** Please note that the pins BM1, CS1 and ID0 are wired on the Display

Used Cable: FPC, 0.5mm, 30 Pins, thickness 0.3mm.

Mating Connector: FPC6B/T30Rx

### Backlight

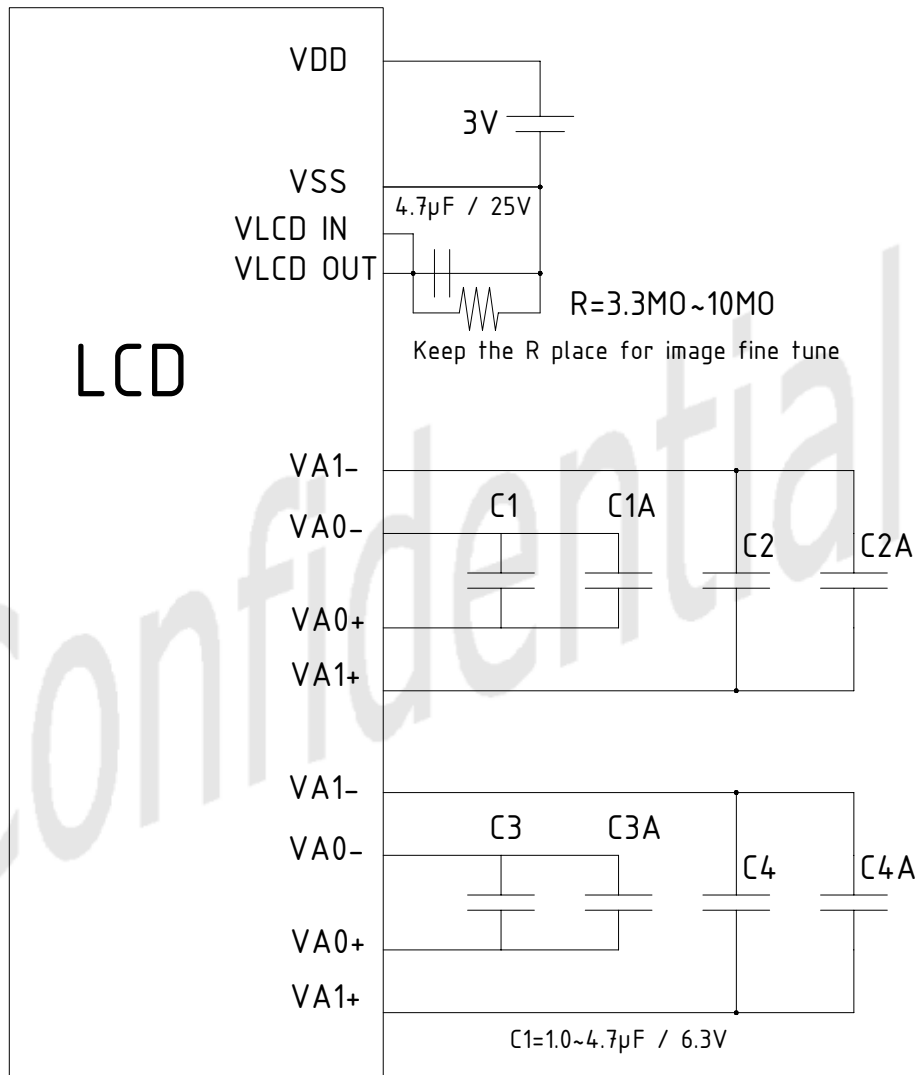
PIN No.	SYMBOL
1	A
2	K <sub>R</sub>
3	K <sub>G</sub>
4	K <sub>B</sub>

Used Backlight connector: EHR-4

Mating connector: S4B-EH (JST)



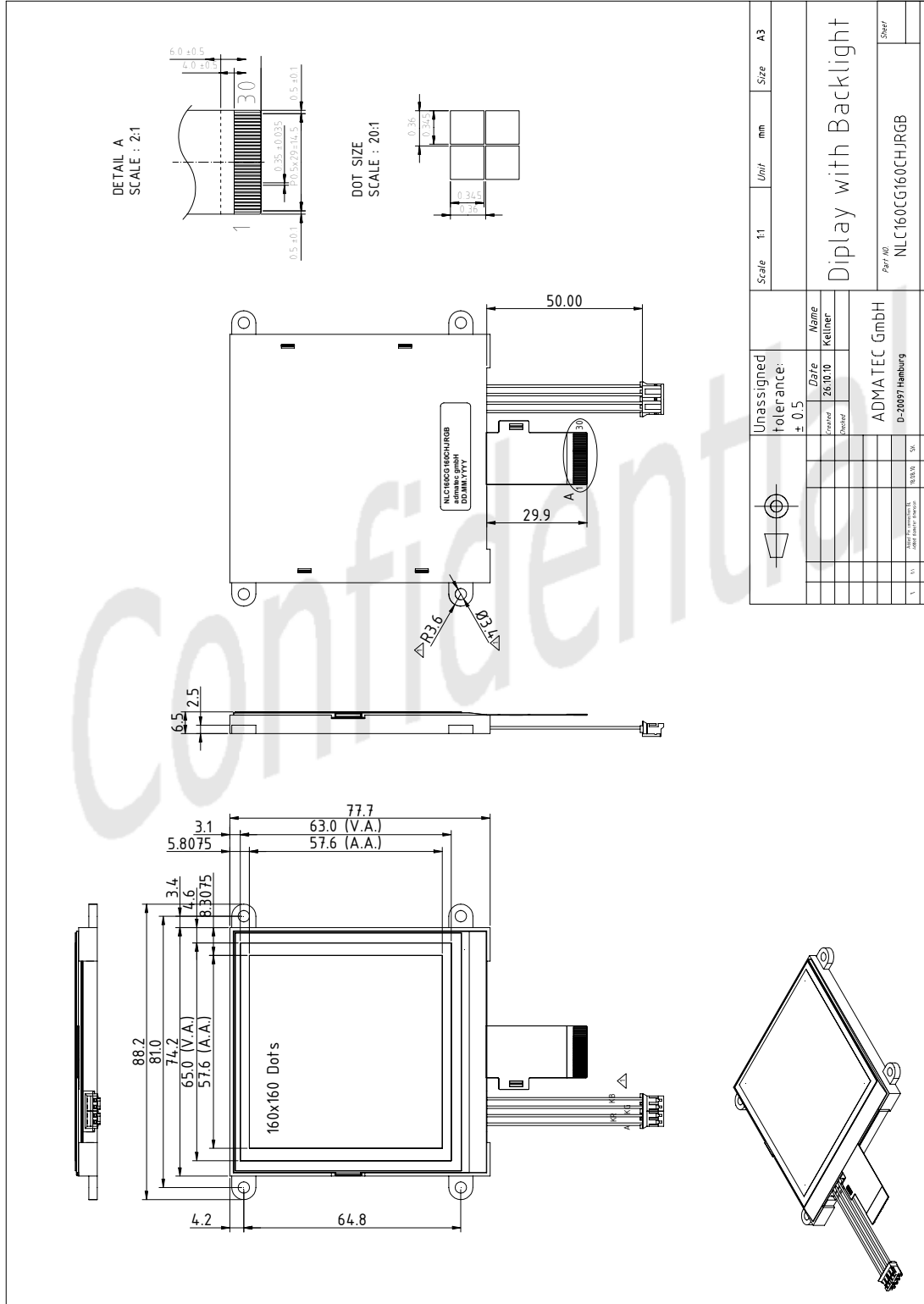
# 7. POWER SUPPLY



C1A=C4A : 4.7µF / 6.3V Keep the R place for image fine tune.



# 11. DRAWING



Scale	1:1	Unit	mm	Size	A3
Unassigned Tolerance: ± 0.5					
Checked		Date	26.10.10	Name	Ketlner
Drawn		ADMATEC GmbH			
D-20097 Hamburg					
Appr.		Appr.		Appr.	
Rev.		Change		Date	Notes
1				10/03/10	SK
2					
3					
4					
5					
6					
7					
8					
9					
10					
11					
12					
13					
14					
15					
16					
17					
18					
19					
20					
21					
22					
23					
24					
25					
26					
27					
28					
29					
30					
31					
32					
33					
34					
35					
36					
37					
38					
39					
40					
41					
42					
43					
44					
45					
46					
47					
48					
49					
50					
51					
52					
53					
54					
55					
56					
57					
58					
59					
60					
61					
62					
63					
64					
65					
66					
67					
68					
69					
70					
71					
72					
73					
74					
75					
76					
77					
78					
79					
80					
81					
82					
83					
84					
85					
86					
87					
88					
89					
90					
91					
92					
93					
94					
95					
96					
97					
98					
99					
100					