

LCD Module

RoHS

NLC128CG128CHJXX

(Status: August 2009)

Specification V1.2

Approval of Specification

	Approved by	Date
Admatec	<i>Stahl</i>	24.08.09
Customer		

This product complies to EU directive 2002/95/EC (RoHS) of January 27th,2003.



1. MECHANICAL DATA

NO.	ITEM	CONTENTS	UNIT
1	Product No.	NLC128CG128CHJXX	
2	Module Size	1(Note) 79.0(W)*79.0(H)*MAX 4.8(D)	mm
		9(Note) 73.0(W)*79.0(H)*MAX 5.9(D)	
3	Dot Size	0.475(W)*0.475(H)	mm
4	Dot Pitch	0.49(W)*0.49(H)	mm
5	Number of Dots	128(W)*128(H)	--
6	Duty	1/128	--
7	LCD Type	FSTN, positive Image	--
8	Rear Polarizer	Transflective (high transmissive)	--
9	Viewing Direction	6 O'clock	--
10	Backlight	LED white	--
11	Controller	NT7506	--
12	DC/DC Converter	Included	--
13	Touch Panel	(Note)	--
14	Weight	1(Note) 41.7 MAX(Approx.)	g
		9(Note) 53.7 MAX(Approx.)	

Note:

NLC128CG128 C H J X X

Back Light
C : LED Backlight

Touch Panel
1 : excluded
9 : included

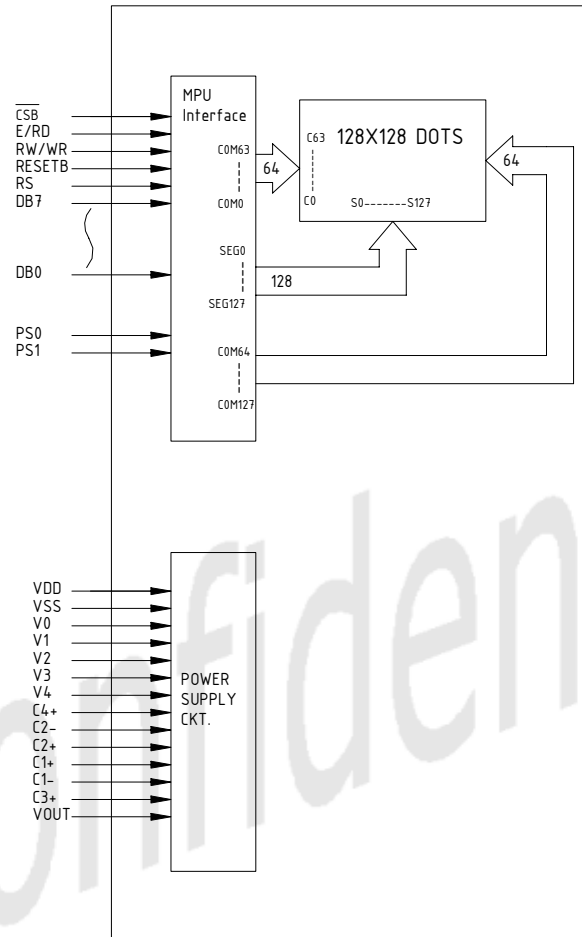
Version No.
2 : Backlight Design A
3 : Backlight Design B

Reflective/Transmissive
H : Transflective (high transmissive)

Mode/View Angle
J : Positive Image, 6 o' clock



5. BLOCK DIAGRAM



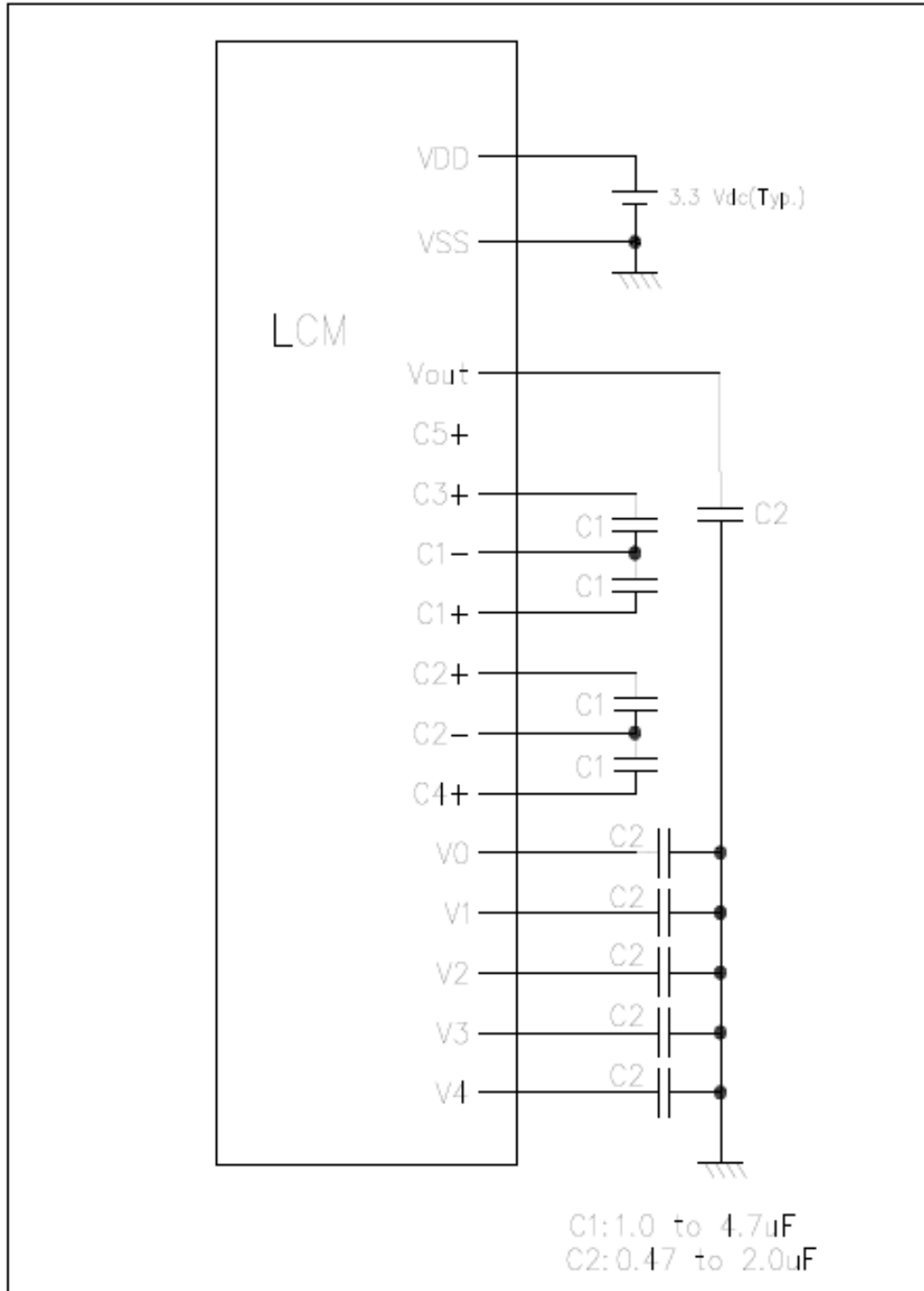


6. INTERNAL PIN CONNECTION

PIN No.	SYMBOL	FUNCTION
1	NC	--
2	V0	LCD driver supply voltages
3	V1	LCD driver supply voltages
4	V2	LCD driver supply voltages
5	V3	LCD driver supply voltages
6	V4	LCD driver supply voltages
7	C4+	Capacitor 4 positive connection pin for voltage converter
8	C2-	Capacitor 2 negative connection pin for voltage converter
9	C2+	Capacitor 2 positive connection pin for voltage converter
10	C1+	Capacitor 1 positive connection pin for voltage converter
11	C1-	Capacitor 1 negative connection pin for voltage converter
12	C3+	Capacitor 3 positive connection pin for voltage converter
13	V _{OUT}	Voltage converter input/output pin
14	V _{SS}	Ground
15	V _{DD}	Power supply for logic
16	DB7	Data Bus
17	DB6	
18	DB5	
19	DB4	
20	DB3	
21	DB2	
22	DB1	
23	DB0	
24	E/RD	Read/Write execution control pin
25	RW/WR	Read/Write execution control pin
26	RS	Register select input pin
27	RESETB	Reset input pin
28	CSB	Chip select input pin
29	PS1	Microprocessor interface select input pin
30	PS0	Parallel/Serial data input select pin

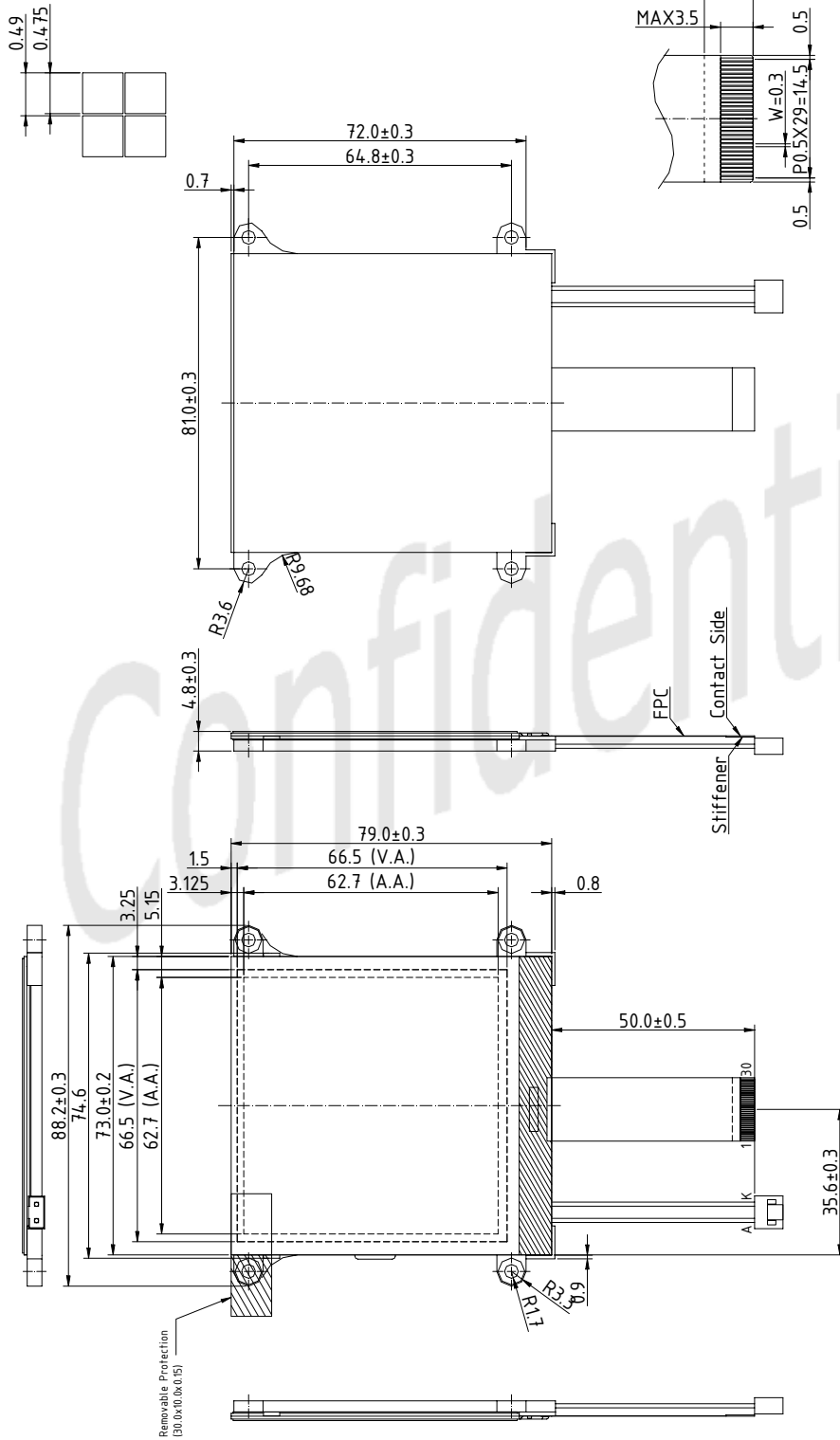


7. POWER SUPPLY





10. DRAWING NLC128CG128CHJ21

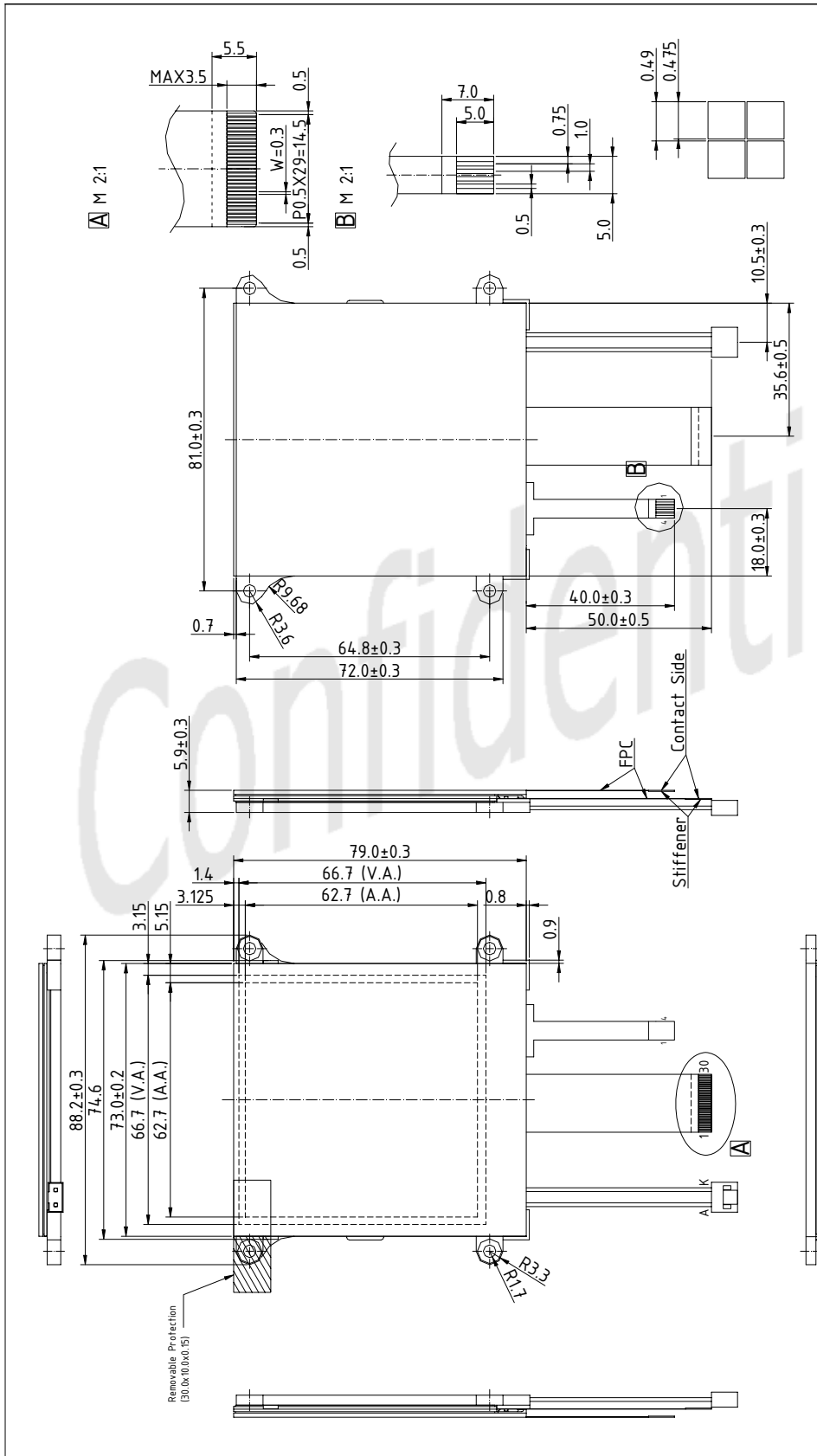


Scale	1:1	Unit	mm	Size	A3
Display with Backlight					
Part No. NLC128CG128CHJ21					
Sheet					
Name		SK			
Date		21.11.18			
Created/Checked		ADMATEC GmbH 0-21197 Hamburg			
Version	Change	Date	Name		

PIN NO.	1	2	3	4	5	6	7	8	9	10	11	12	13	14	15
SIGNAL	NC	V0	V1	V2	V3	V4	C4+	C2-	C2+	C1+	C1-	C3+	VOUT	GND	VDD
PIN NO.	16	17	18	19	20	21	22	23	24	25	26	27	28	29	30
SIGNAL	DB7	DB8	DB5	DB4	DB3	DB2	DB1	DB0	E/RD	PW/MR	RS	RESETB	CSB	PS1	PS0



NLC128CG128CHJ29



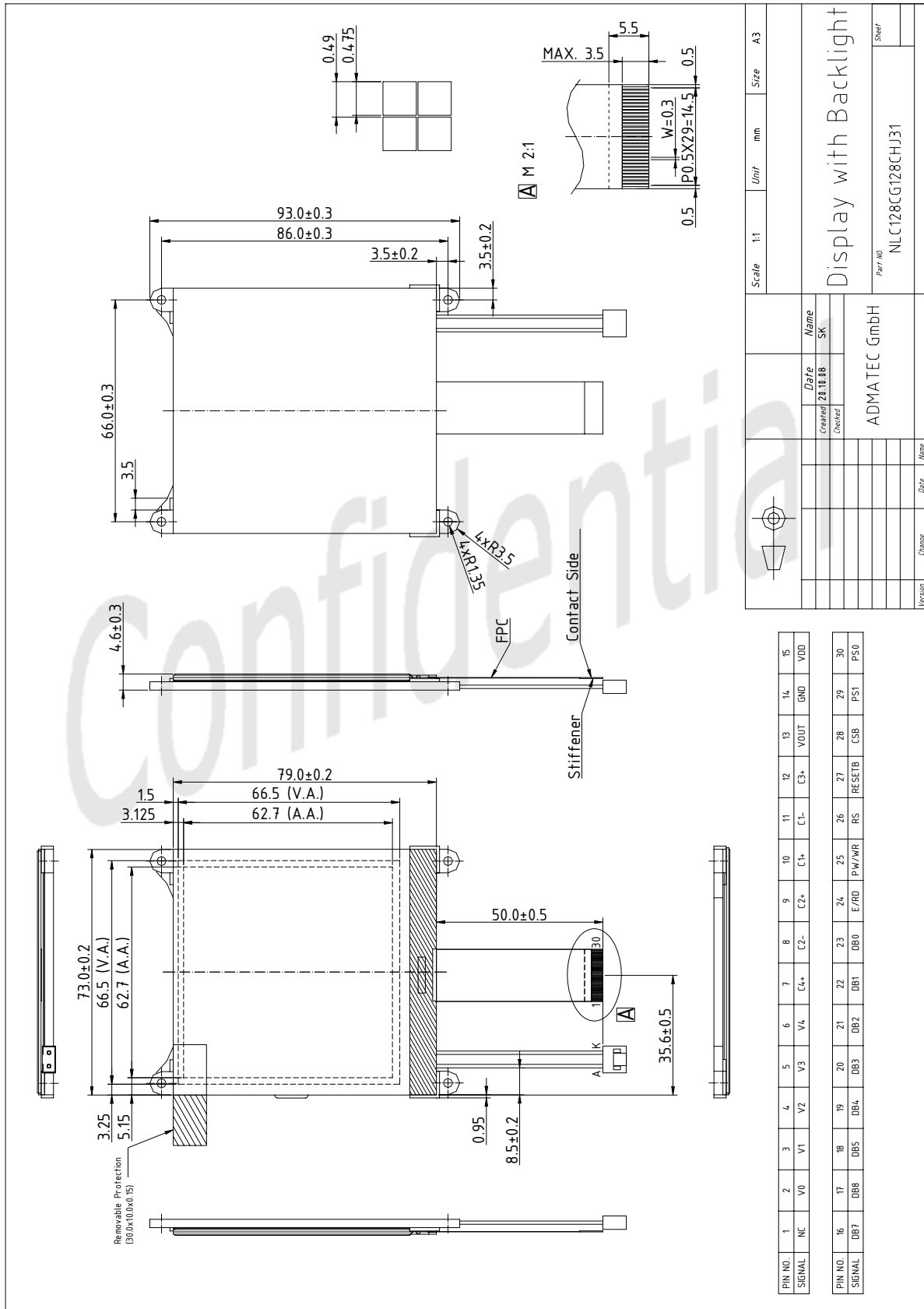
Scale	1:1	Unit	mm	Size	A3
Display, Backlight and Touch Part No. NLC128CG128CHJ29					
Name		ADIMATEC GmbH			
Checked		SK			
Date		21.10.18			
Version	Change	Date	Name		

PIN NO.	1	2	3	4	5	6	7	8	9	10	11	12	13	14	15
SIGNAL	NC	V0	V1	V2	V3	V4	C4+	C2-	C2+	C1+	C1-	C3+	VOUT	GND	VDD

PIN NO.	16	17	18	19	20	21	22	23	24	25	26	27	28	29	30
SIGNAL	DB7	DB8	DB5	DB4	DB3	DB2	DB1	DB0	E/RD	PW/WR	RS	RESETB	CSB	PS1	PS0



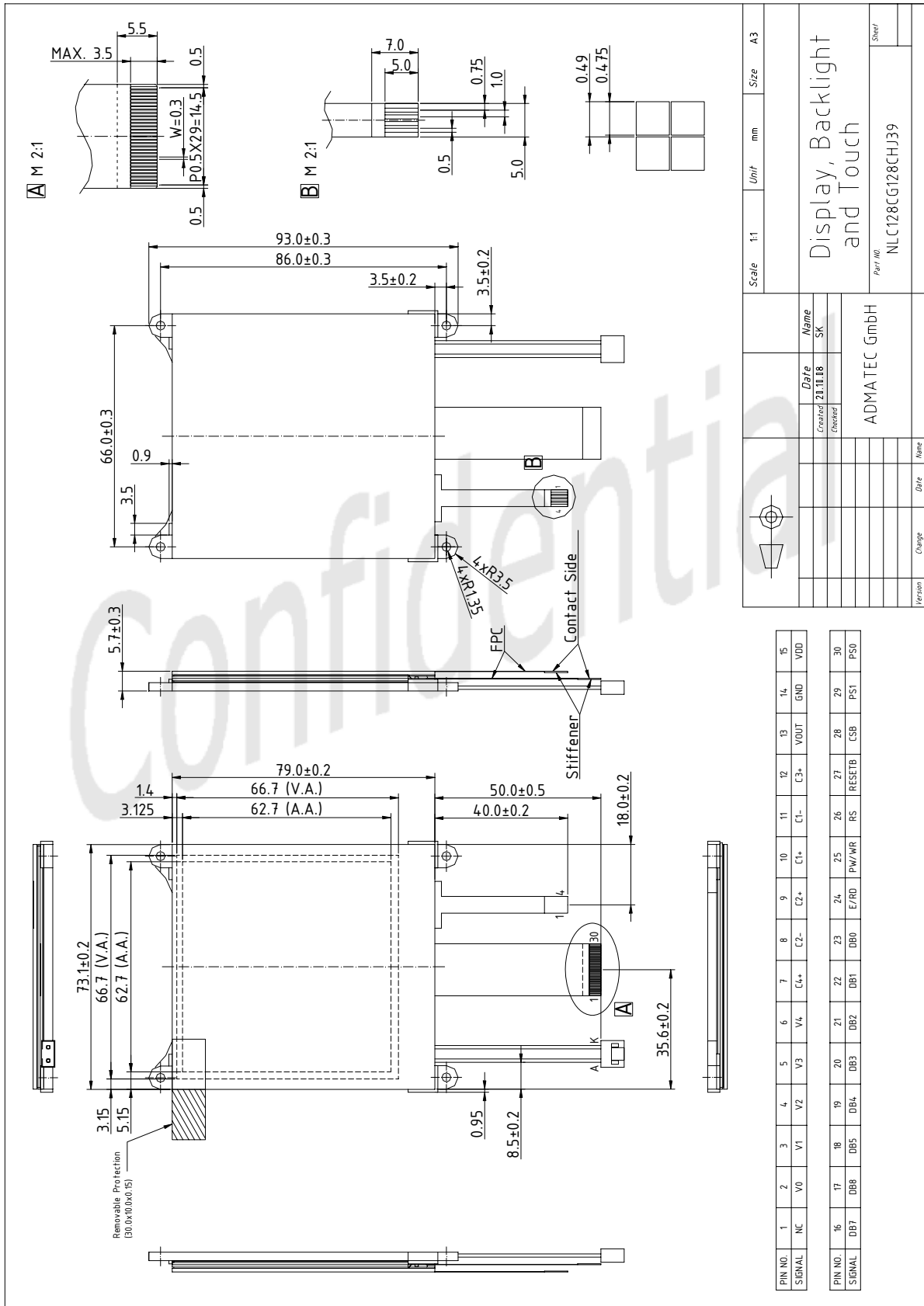
NLC128CG128CHJ31



Scale	1:1	Unit	mm	Size	A3
Display with Backlight					
Part No. NLC128CG128CHJ31					
Sheet					
ADMATEC GmbH					
Name SK					
Date 21.10.08					
Created					
Checked					
Version					
Change					
Date					
Name					



NLC128CG128CHJ39



Scale	1:1	Unit	mm	Size	A3
Name	Display, Backlight and Touch				
Date	21.11.18				
Created	SK				
Checked					
Version	ADIMATEC GmbH				
Part No.	NLC128CG128CHJ39				
Sheet					

PIN NO.	1	2	3	4	5	6	7	8	9	10	11	12	13	14	15
SIGNAL	NC	V0	V1	V2	V3	V4	C4+	C2-	C2+	C1+	C1-	C3+	VOUT	GND	VDD
PIN NO.	16	17	18	19	20	21	22	23	24	25	26	27	28	29	30
SIGNAL	DB7	DB8	DB5	DB4	DB3	DB2	DB1	DB0	E/RD	PW/WR	RS	RESETB	CSB	PS1	PS0