

LCD Module

NLC240P064DSCx

(Status: Juli 2006, Rev. 0)



SPECIFICATION

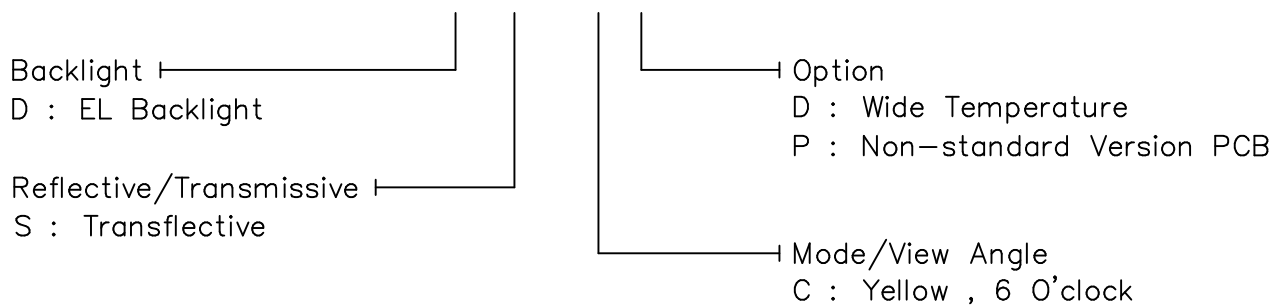
DATE : Jul. 17. 2006

SHEET NO. : 1/23

1. MECHANICAL DATA

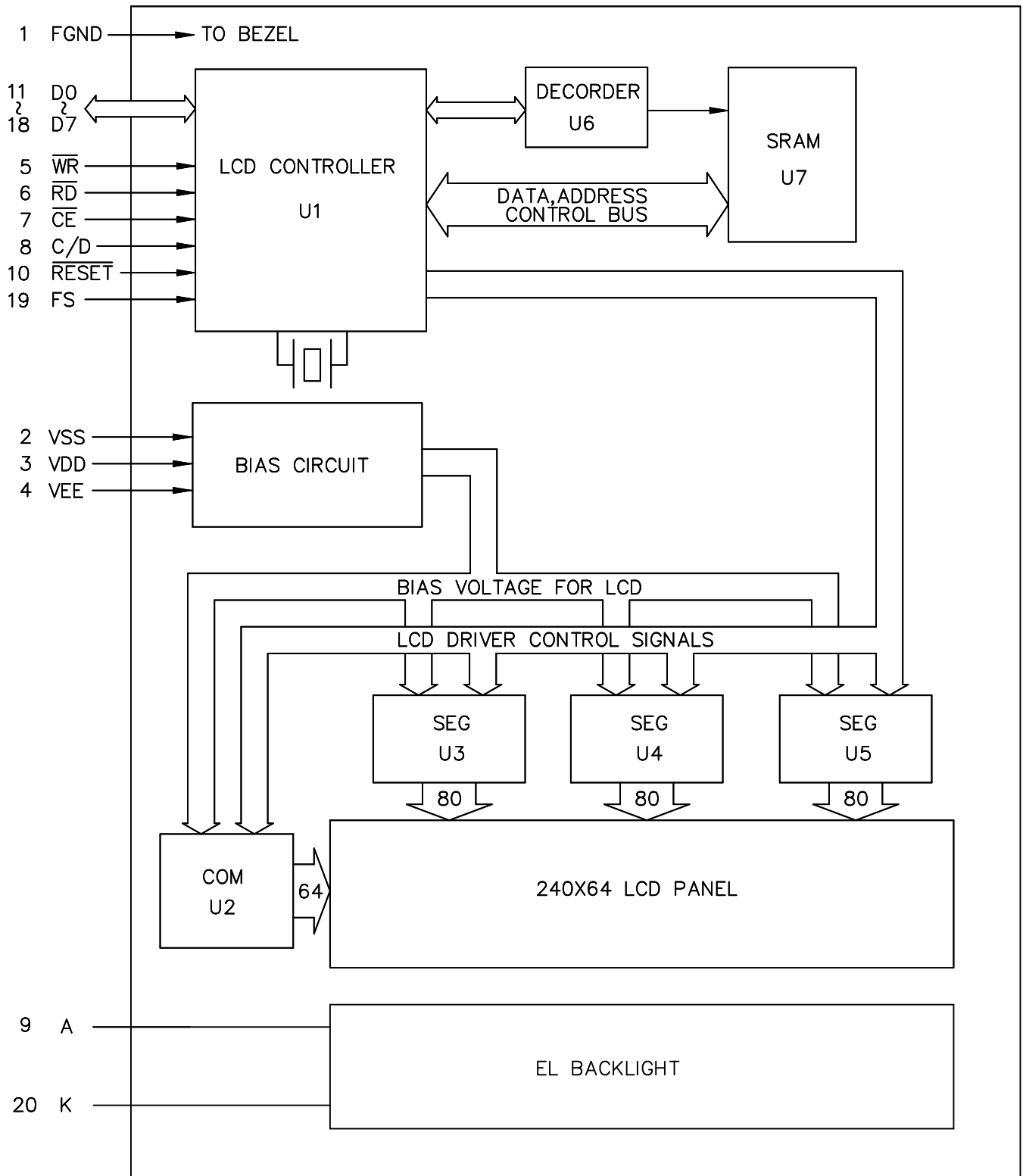
NO	ITEM	CONTENTS	UNIT
1	Product No.	NLC240P064DSCx	-
2	Module Size	180.0 (W) x 65.0 (H) x MAX 9.5 (D)	mm
3	Dot Size	0.49 (W) x 0.49 (H)	mm
4	Dot Pitch	0.53 (W) x 0.53 (H)	mm
5	Number of Dots	240 (W) x 64 (H)	Dot
6	Duty	1/64	-
7	LCD Display Mode	STN, Yellow Mode	-
8	Rear Polarizer	Transflective Type	-
9	Viewing Direction	6	O'clock
10	Backlight	EL	-
11	Controller	T6963CFG-0101(C)	-
12	DC/DC Converter	Excluded	-
13	Weight	135 (Approx.)	g

Note : **NLC240P064x x x x**

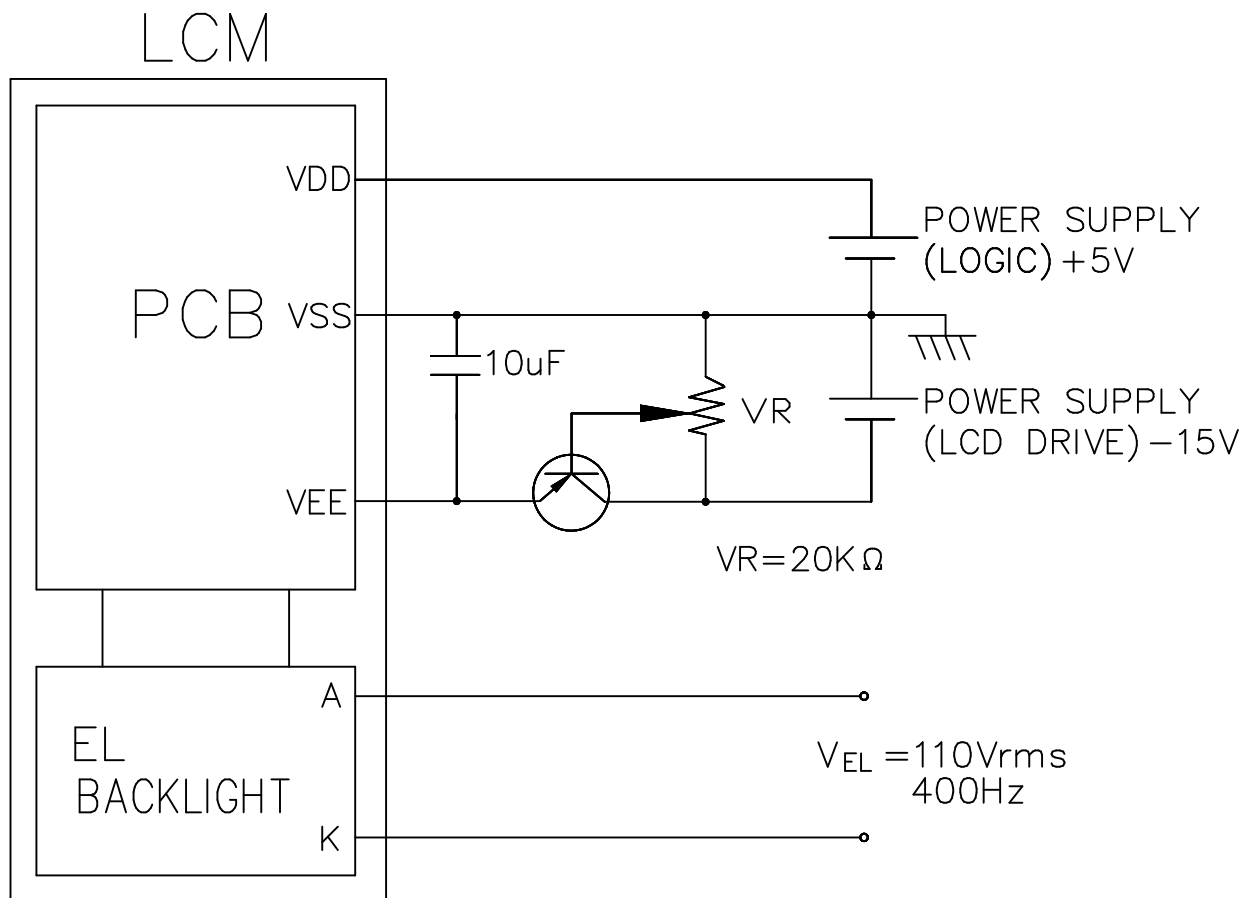


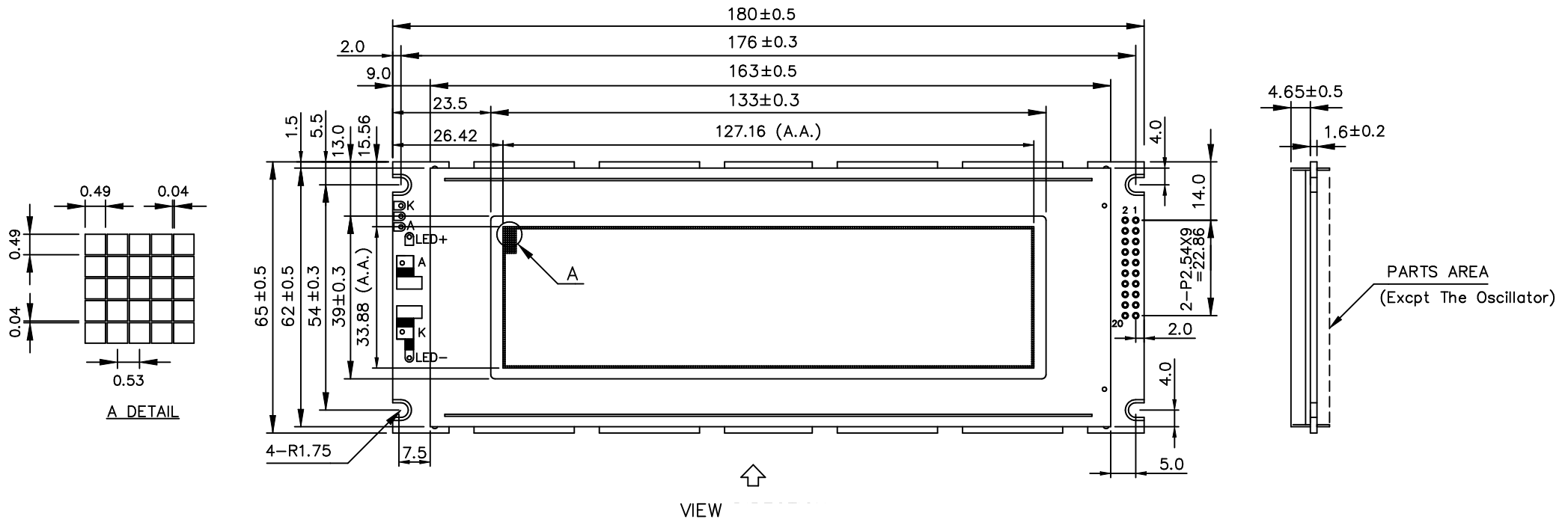
REV/DATE	R0/ 07.17.06'					BY W.R.HSU
----------	------------------	--	--	--	--	---------------

5. BLOCK DIAGRAM

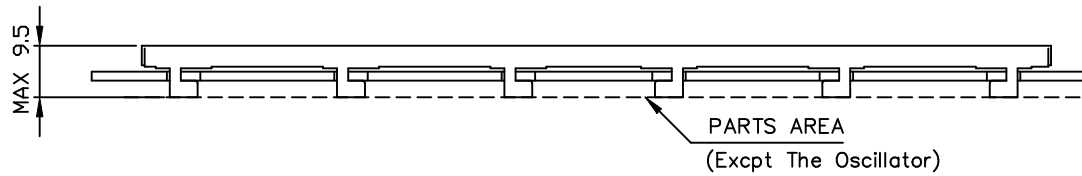


7. POWER SUPPLY





VIEW



PIN NO.	SYMBOL	FUNCTION	PIN NO.	SYMBOL	FUNCTION
1	FGND	FRAME GROUND (0V)	11	D0	DATA INPUT/OUTPUT, LSB
2	VSS	GROUND	12	D1	DATA INPUT/OUTPUT
3	VDD	POWER SUPPLY FOR LOGIC (+5V)	13	D2	DATA INPUT/OUTPUT
4	VEE	POWER SUPPLY FOR LC DRIVING	14	D3	DATA INPUT/OUTPUT
5	\overline{WR}	DATA WRITE	15	D4	DATA INPUT/OUTPUT
6	\overline{RD}	DATA READ	16	D5	DATA INPUT/OUTPUT
7	\overline{CE}	CHIP ENABLE	17	D6	DATA INPUT/OUTPUT
8	C/D	\overline{WR} ="L",C/D="H" : COMMAND WRITE	18	D7	DATA INPUT/OUTPUT, MSB
		\overline{WR} ="L",C/D="L" : DATA WRITE			
9	A	\overline{RD} ="L",C/D="H" : STATUS READ	19	FS	FONT SELECT CONNECT TO VDD : 6X8 PIXELS/CHARACTER CONNECT TO VSS : 8X8 PIXELS/CHARACTER
		\overline{RD} ="L".C/D="L" : DATA READ			
10	\overline{RESET}	CONTROLLER RESET	20	K	POWER SUPPLY FOR EL B/L

- Notes:
- Resolution : 240 x 64 Dots
 - Backlight : EL (White)
 - Frame Material : SPCC (0.5 mmt)

GENERAL TOLERANCE LIST

DIMENSION	TOLERANCE
$L \leq 6$	± 0.25 (mm)
$6 < L \leq 18$	± 0.3 (mm)
$18 < L \leq 50$	± 0.4 (mm)
$50 < L \leq 125$	± 0.5 (mm)
$125 < L$	± 0.6 (mm)
ANGLE	$\pm 1^\circ$ (DEG)

NLC240P064DSCx

REV. NO.	DESCRIPTION	DATE	DESIGN	CHECK	APPROVE	NAME	DATE	THIRD ANGLE P.		
						APPROVE				
						CHECK				
						DESIGN	CLOUDE	95.07.03	SCALE	UNIT
						DRAWN	CLOUDE	95.07.03	1/1	mm

www.admatec.com