



admatec

The better Display Solution

LCD Module

T070C010240600T00G0B18

DATA SHEET

Product specification V 1.0

Approval of specification

	Approved by	Date
admatec	H. Ghaybi	2016-03-01
Customer		

This product complies to EU directive 2002/95/EC (RoHS) of January 27th, 2003.

1 General data

Table 1.1: General data

No.	Item	Content
1.	module size	164.0 mm (W) * 97.0 mm (H) * 2.6 mm (T)
2.	visible area	157.02 mm (W) * 88.92 mm (H)
3.	active area	154.21 mm (W) * 85.92 mm (H)
4.	pixel pitch	0.151 mm (W) * 0.143 mm (H)
5.	number of dots	1024 * 3 (RGB) (W) * 600 (H)
6.	LCD type	IPS-TFT color 16.7M, transmissive
7.	backlight	LED white
8.	controller	EK79001
9.	interface	LVDS
10.	weight	86.3g (approx.)

5 Block diagram

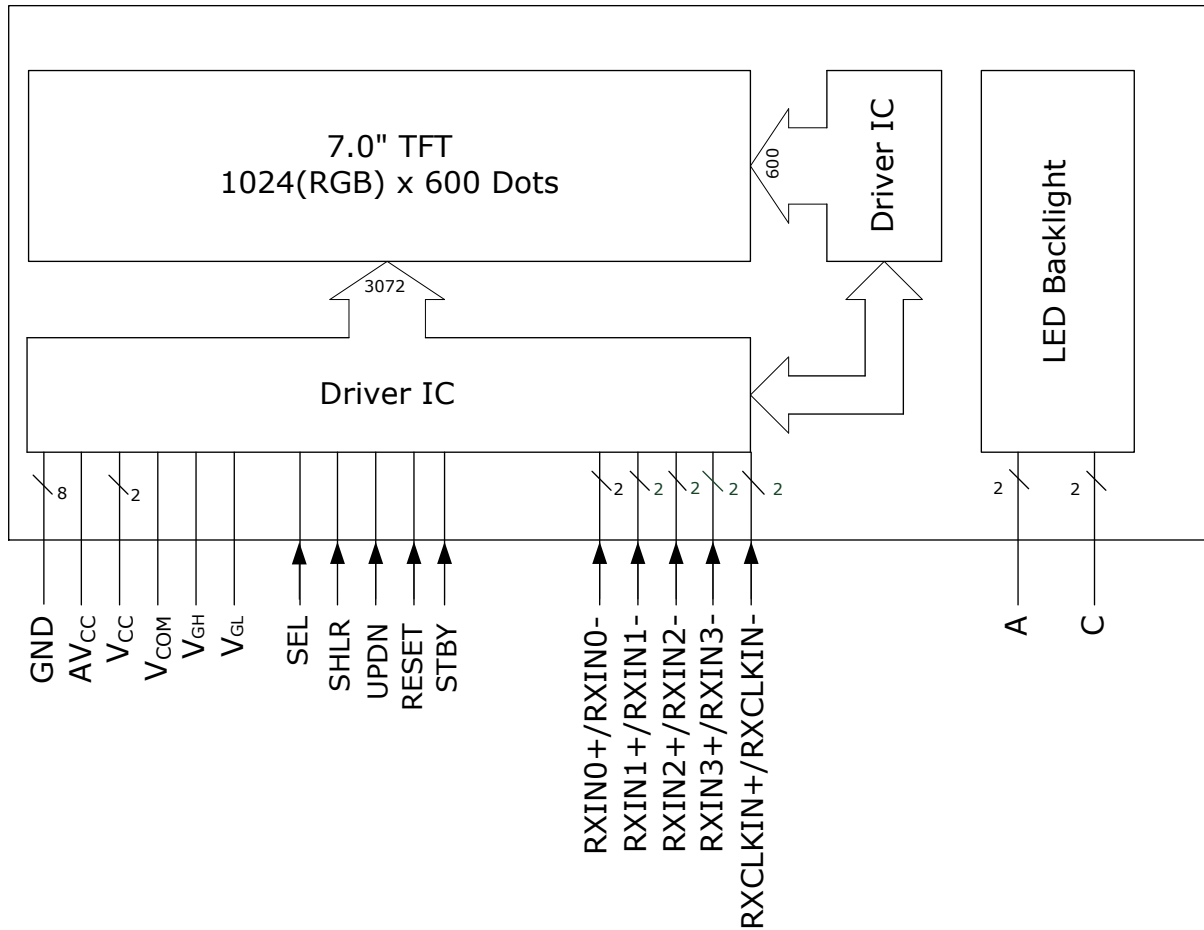


Figure 5.1 : Block diagram of T070C010240600T00G0B18

6 Interface description

6.1 Interface of LCD

Table 6.1: LCD interface description

Symbol	Pin no.	IO	Function
V _{COM}	1	PWR	common power supply
V _{CC}	2	PWR	power supply for logic
V _{CC}	3	PWR	
NC	4	--	not connected
RESET	5	I	reset
STBY	6	I	standby mode 'H' = normal operation 'L' = TFT will turn off
GND	7	PWR	ground
RXIN0-	8	I	negative LVDS differential data inputs 0
RXIN0+	9	I	positive LVDS differential data inputs 0
GND	10	PWR	ground
RXIN1-	11	I	negative LVDS differential data inputs 1
RXIN1+	12	I	positive LVDS differential data inputs 1
GND	13	PWR	ground
RXIN2-	14	I	negative LVDS differential data inputs 2
RXIN2+	15	I	positive LVDS differential data inputs 2
GND	16	PWR	ground
RXCLKIN-	17	I	negative LVDS differential clock inputs
RXCLKIN+	18	I	positive LVDS differential clock inputs
GND	19	PWR	ground
RXIN3-	20	I	negative LVDS differential data inputs 3
RXIN3+	21	I	positive LVDS differential data inputs 3
GND	22	PWR	ground
NC	23	--	not connected
NC	24	--	not connected
GND	25	PWR	ground
NC	26	--	not connected
NC	27	--	not connected
SEL	28	I	6-bit/8-bit mode select 'H' = 6-bit mode 'L' = 8-bit mode
AV _{CC}	29	PWR	power supply for LCD
GND	30	PWR	ground
C	31	PWR	backlight cathode
C	32	PWR	backlight cathode
SHLR	33	I	horizontal inversion
UPDN	34	PWR	gate off power supply
V _{GL}	35	I	vertical inversion
NC	36	--	not connected
NC	37	--	not connected
V _{GH}	38	PWR	gate on power supply
A	39	PWR	backlight anode
A	40	PWR	backlight anode

FPC: 40 pin, 0.5 mm pitch

10 Drawing

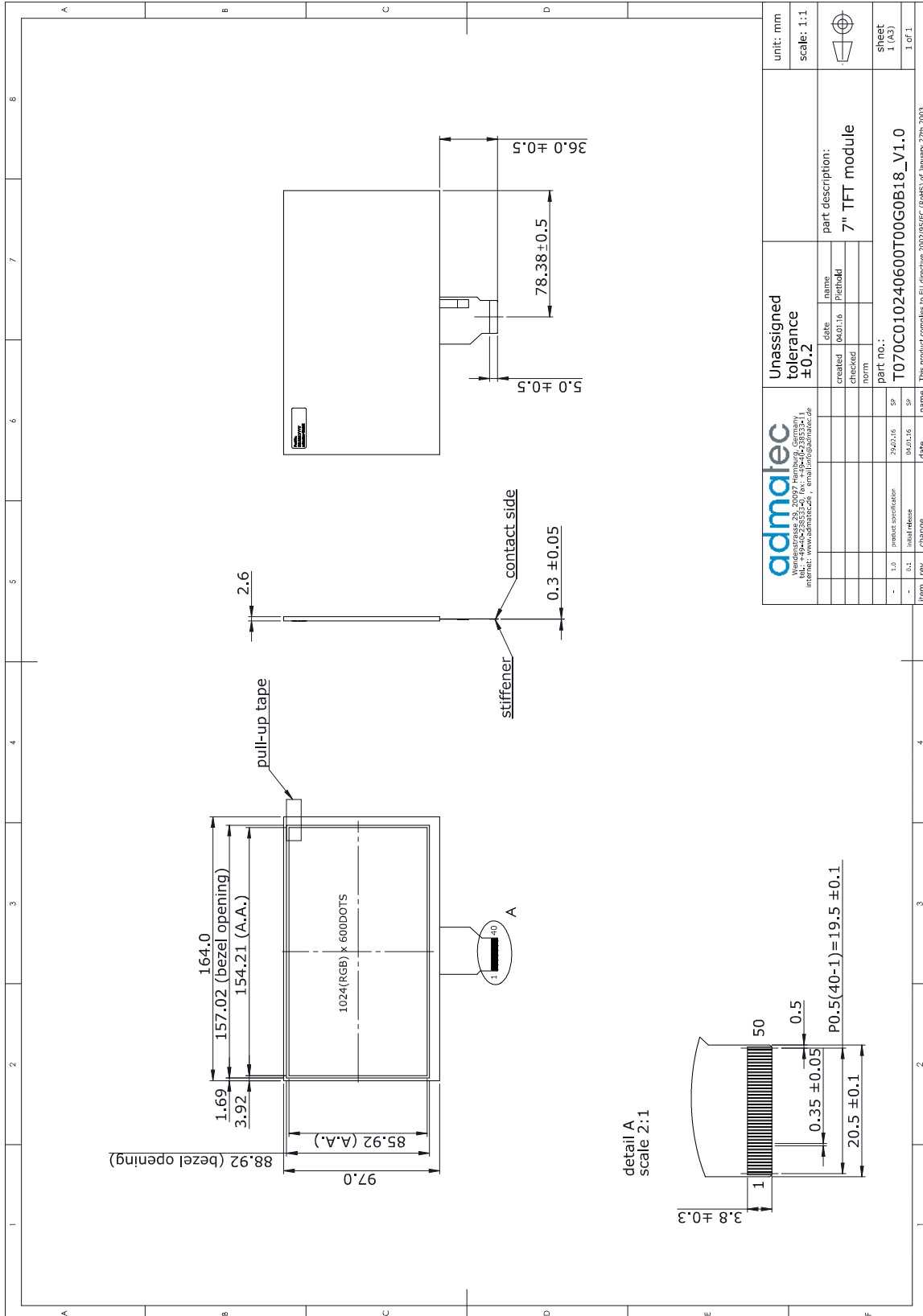


Fig 10.1: Drawing of T070C010240600T00G0B18

admatec Wendstrasse 29, 20097 Hamburg, Germany Internet: www.admatec.de, E-Mail: info@admaterc.de		Unassigned tolerance ±0.2		part description: 7" TFT module		unit: mm
created	04.01.16	date	04.01.16	name	Pfeiffel	scale: 1:1
checked	norm	checked	norm	part no.:	T070C010240600T00G0B18_V1.0	sheet 1 (of 1)
term	1.0 product specification	date	29.07.16	name	SP	1 of 1
rev.	0.1 initial release	date	04.01.16	name	SP	
change						
This product complies to EU directive 2002/95/EC (RoHS) of January 27th, 2003						