

Barcode Scan Engines

MT1095

**This document was
provided by
admatec GmbH**



MINI BARCODE READER

Quick Guide



FCC WARNING STATEMENT

This equipment has been tested and found to comply with the limits for a Class B digital device, pursuant to Part 15 of the FCC Rules. These limits are designed to provide reasonable protection against harmful interference in a residential installation.

This equipment generates, uses and can radiate radio frequency energy and, if not installed and used in accordance with the instructions, may cause harmful interference to radio communications. However, there is no guarantee that interference will not occur in a particular installation. If this equipment does cause harmful interference to radio or television reception, which can be determined by turning the equipment off and on, the user is encouraged to try to correct the interference by one of the following measures:

- Reorient or relocate the receiving antenna.
- Increase the separation between the equipment and receiver.
- Connect the equipment into an outlet on a circuit different from that to which the receiver is connected.
- Consult the dealer or an experienced radio/TV technician for help.

CANADIAN DOC STATEMENT

This digital apparatus does not exceed the Class B limits for radio noise for digital apparatus set out in the Radio Interference Regulations of the Canadian Department of Communications.

Le présent appareil numérique n'émet pas de bruits radioélectriques dépassant les limites applicables aux appareils numériques de la classe B prescrites dans le Règlement sur le brouillage radioélectrique édicté par le ministère des Communications du Canada.

CE MARKING AND EUROPEAN UNION COMPLIANCE

Testing for compliance to CE requirements was performed by an independent laboratory. The unit under test was found compliant with all the applicable Directives, 2004/108/EC and 2006/95/EC.

WASTE ELECTRICAL AND ELECTRONIC EQUIPMENT

The WEEE directive places an obligation on all EU-based manufacturers and importers to take-back electronic products at the end of their useful life.

ROHS STATEMENT OF COMPLIANCE

This product is compliant to Directive 2002/95/EC.



WARNING AND CAUTION



1. Take any metals into contact with the terminals in connectors.
2. Use the scanner where any inflammable gases.



If following condition occur, immediately power off the host computer, disconnect the interface cable, and contact your nearest dealer.

1. Smoke, abnormal odors or noises come from the scanner.
2. Drop the scanner so as to affect the operation or damage its housing.

Do not do behavior below.

1. Put the scanner in places excessively high temperatures such as expose under direct sunlight.
2. Use the scanner in extremely humid area or drastic temperature changes.
3. Place the scanner in oily smoke or steam environment such as cooking range.
4. Be covered or wrapped up the scanner in bad-ventilated area such as under cloth or blanket.
5. Insert or drop foreign materials or water into scanning window or vents.
6. Using the scanner while hand is wet or damp.
7. Use the scanner with anti-slip gloves containing plasticizer and chemicals or organic solvents such as benzene, thinner, insecticide etc to clean the housing. Otherwise, it could not result fire and electrical shock but housing may be broken and injured.
8. Scratch or modify the scanner and bend, twist, pull or heat its interface cable.
9. Put heavy objects on interface cable.



Do Not

Do not stare the light source from the scanning window or do not point the scanning window at other people's eyes or eyesight may be damaged by direct exposure under the light.



Do not put the scanner on an unstable or inclined plane. The scanner may drop, creating injuries.



Once the interface cable is damaged such as exposed or broken copper wires, stop using immediately and contact your dealer. Otherwise, it could result fire or electrical shock.

OUT OF THE BOX



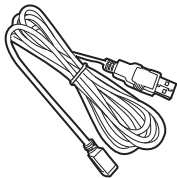
Mini Barcode Reader



CD



Quick Guide



USB Extension Cable
(Optional)

INTRODUCTION

Protective Cover

USB Connector

Trigger

Beeper

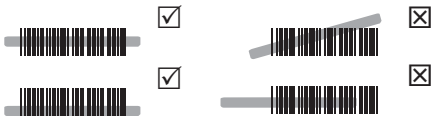
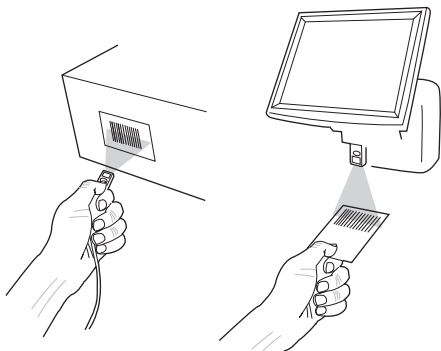
Exit Window



SPECIFICATIONS

Light source	625nm visible red LED
Scan rate	240 scans/sec
Sensor	Linear CMOS sensor
Resolution	5mil/ 0.127mm
PCS	30%
Housing	Plastic(Polycarbonate)
Interface	USB
Voltage	5 VDC \pm 5%
Current	< 115 mA(Working); < 60 mA(Standby)
Operating Temp	0 to 50 °C (32 °F to 122 °F)
Storage Temp	-20 to 60 °C (-4 °F to 140 °F)
Symbologies	All major 1D barcodes incl. GS1 Databar

GETTING STARTED





To scan a barcode, make sure the aiming beam crosses every bar and space of the barcode. For fixed mounted scanning, Continuous Mode(see **READING MODE**) is recommended.

BEEPER INDICATION

Single long beep	Power up
Single beep	Good read
Single fast beep	The scanner reads a Code39 of ASCII in configuration procedure
Two beeps	The scanner successfully reads a configuration barcode
Three fast beeps	The scanner reads an unexpected barcode during configuration procedure. (scan [RESET] to abort and start over)

EZU CONFIGURATION UTILITY



1. Install EzU
2. Retrieve scanner parameters 
3. Edit the parameters on the widow
4. Update scanner parameters 

EzU (available on CD and website) enables you to configure the scanner with your PC/Laptop via USB two-way communication. Please refer to EzU Help file for detailed information.

GENERAL SETTINGS

. A001\$



DEFAULT

. P023\$



RESET

. A007\$



CHECK
VERSION

INTERFACE

. C008\$



USB HID

BEEPER

. F012\$



BEEP OFF

READING MODE

. F002\$



TRIGGER

. F003\$



TOGGLE

. F001\$



FLASH

. F005\$



CONTINUOUS

. F006\$



CONTINUOUS
AUTO OFF

KEYBOARD LAYOUT

. C010\$



ENGLISH
(USA)

. C018\$



ENGLISH
(UK)

. C012\$



FRENCH

. C011\$



GERMAN

. C016\$



SWISS

. C013\$



SPANISH

. C014\$



ITALIAN

. C017\$



CZECH
(QWERTY)

. C022\$



CZECH
(QWERTZ)

. C021\$



HUNGARIAN

. C009\$



JAPAN
(106 key)

. C015\$



ALT CODE

ENABLE SYMBOLOGIES

. A002\$



ENABLE
ALL CODE

. K010\$



CODE 32

. L010\$



UK PLESSEY

. L001\$



MSI

. N001\$



INDUSTRIAL
2 OF 5

. M010\$



MATRIX
2 OF 5

CODE 93

. G010\$



IATA

. N017\$



TELEPEN

. L014\$



GS1 DATABAR

. N032\$



GS1 DATABAR
LIMITED

. N010\$



GS1 DATABAR
EXPANDED

. N026\$



TERMINATOR

. D012\$



CR

. D011\$



LF

. D013\$



CR + LF

. D010\$



NONE

. D015\$



SPACE

. D014\$



TAB

TEST BARCODES

Code 39



CODE-39 TEST

Interleaved 2 of 5



9876543210

Code 128



12345678

EAN

